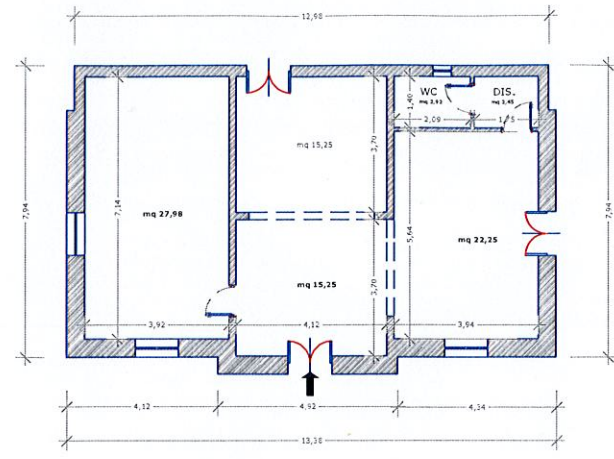
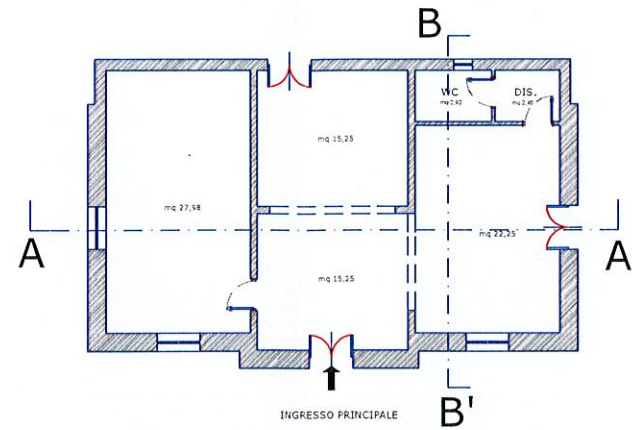


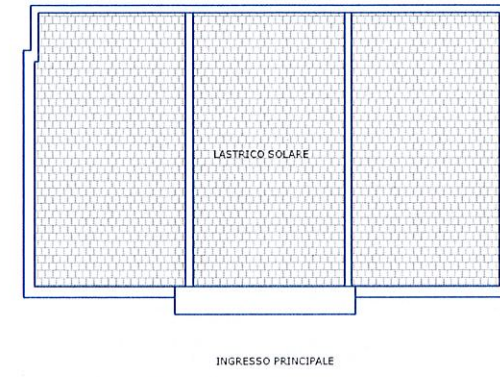
STATO DI FATTO



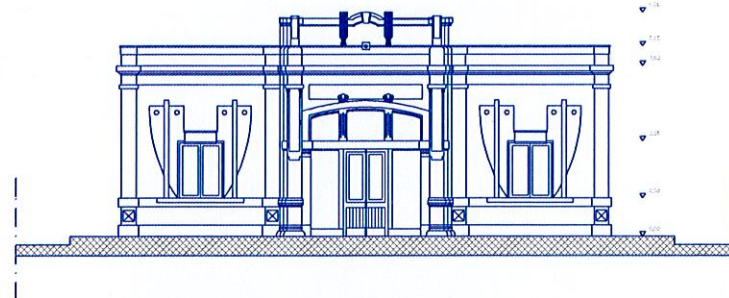
PLANIMETRIA QUOTATA



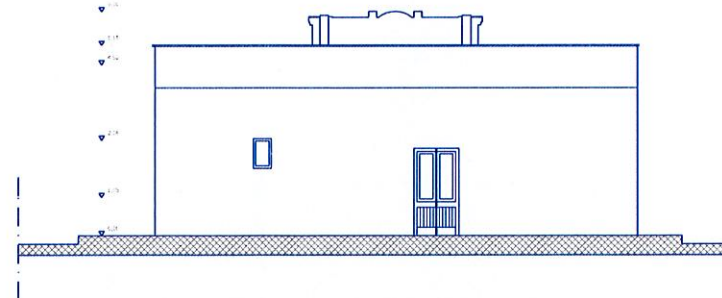
PLANIMETRIA GENERALE
piano terra



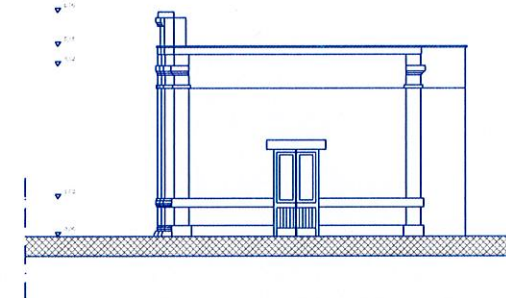
PLANIMETRIA GENERALE
lastrico solare



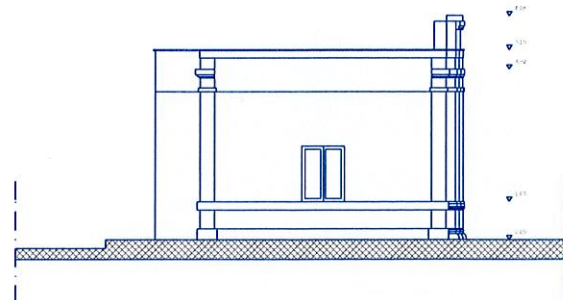
PROSPETTO PRINCIPALE



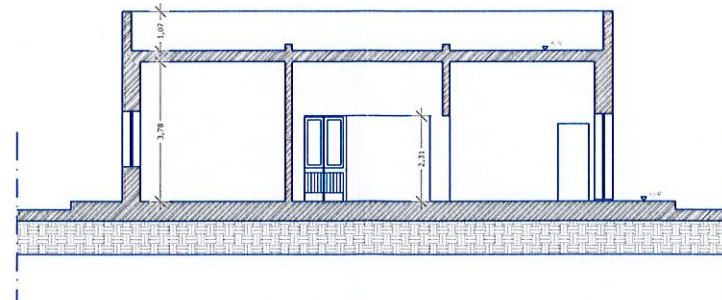
PROSPETTO POSTERIORE



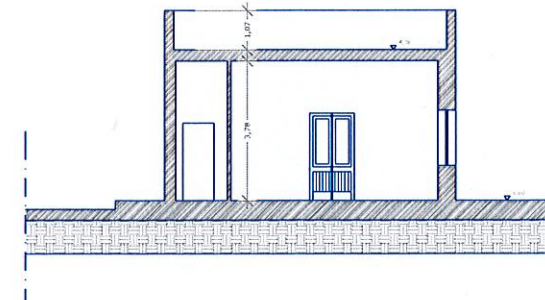
PROSPETTO LATO NORD



PROSPETTO LATO SUD



SEZIONE A-A'



SEZIONE B-B'